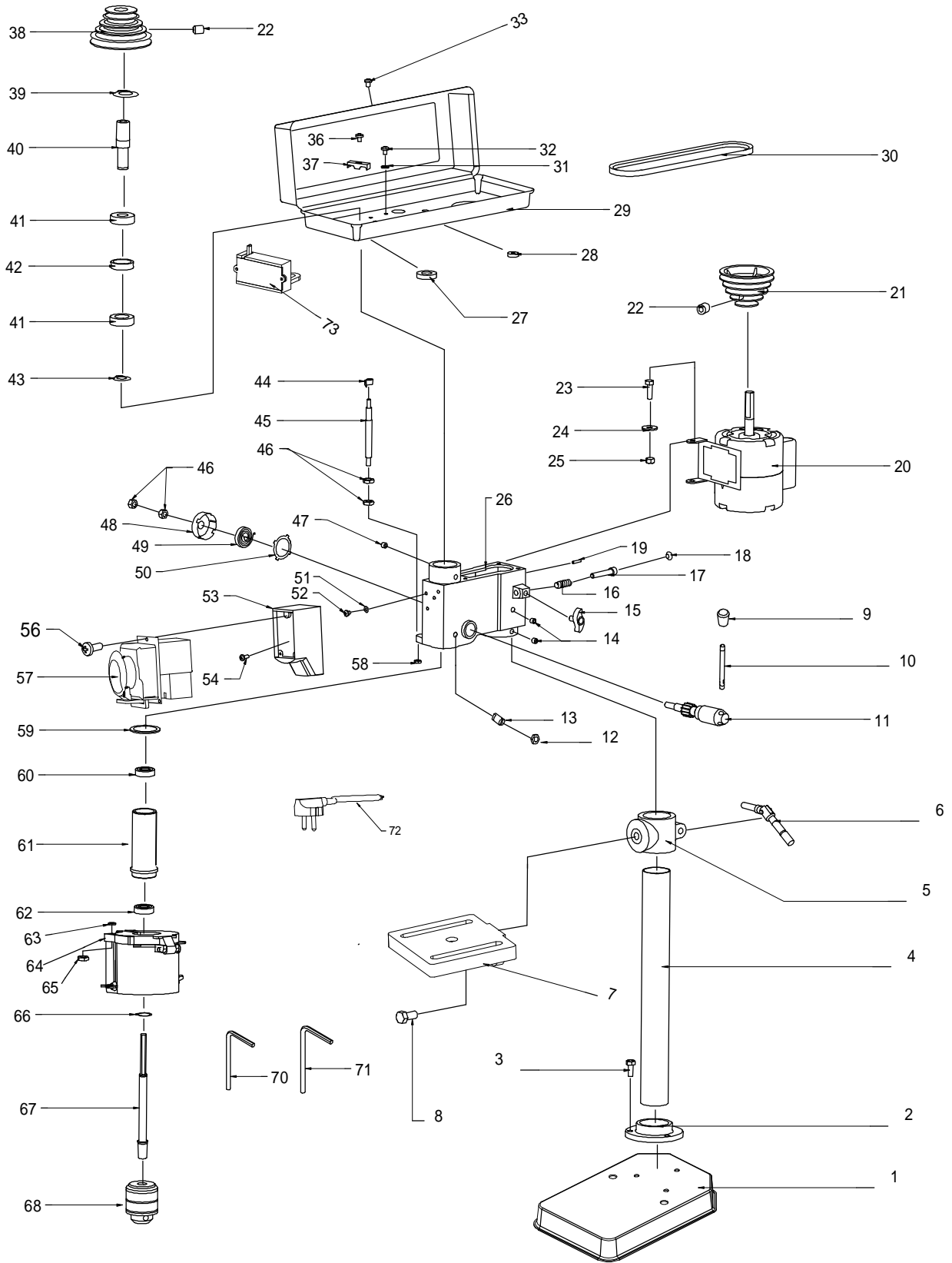


td 13t



td 13t



| Skizze | Art.Nr. | Benennung | decription |
|--------|------------|------------------|-------------------|
| 1 | 3906803012 | | |
| 2 | 3906803013 | Stützsäule | support column |
| 3 | 3906803014 | | |
| 4 | 3906803015 | | |
| 5 | 3906803016 | Tischgelenk | TABLE SUPPORT |
| 6 | 88000429 | Verstellhebel | table clamp |
| 7 | 3906803018 | Tisch | TABLE |
| 8 | 3906803019 | | |
| 9 | 3906803020 | Knopf | KNOB |
| 10 | 3906803021 | Stange | FEED HANDLE ROD |
| 11 | 3906803022 | Ritzelwelle | SHAFT PINION |
| 12 | 3906803023 | | |
| 13 | 3906803024 | | |
| 14 | 3906803025 | | |
| 15 | 3906803026 | Dreknopf | MOTOR ADJUST KNOB |
| 16 | 3906803027 | | |
| 17 | 3906803028 | | |
| 18 | 3906803029 | | |
| 19 | 3906803030 | | |
| 20 | 3906803010 | Motor | MOTOR |
| 21 | 3906803031 | Riemenscheibe | PULLEY MOTOR |
| 22 | 01091628 | Gewindestift | Screw |
| 23 | 3906803033 | | |
| 24 | 3906803034 | | |
| 25 | 3906803035 | | |
| 26 | 3906803036 | | |
| 27 | 3906803037 | | |
| 28 | 3906803038 | | |
| 29 | 3906803039 | Schutz | GUARD |
| 30 | 3906803040 | Riemen | V-BELT |
| 31 | 3906803041 | | |
| 32 | 3906803042 | | |
| 33 | 3906803043 | | |
| 34 | 3906803044 | | |
| 35 | 3906803045 | | |
| 36 | 3906803046 | | |
| 37 | 3906803047 | | |
| 38 | 3906803048 | Riemenscheibe | PULLEY SPINDLE |
| 39 | 01047119 | Sicherungsring | RETAINING RING |
| 40 | 3906803050 | Welle | shaft |
| 41 | 06206203 | Rillenkugellager | BEARING |
| 42 | 3906803052 | Distanzbuchse | SPACER |
| 43 | 01047114 | Sicherungsring | RETAINING RING |
| 44 | 88001770 | Zeiger | POINTER |
| 45 | 3906803055 | Spindel | spindle |
| 46 | 3906803056 | Mutter | hex nut |
| 47 | 3906803057 | | |

| | | | |
|-----------|------------|-------------------|-----------------------|
| 48 | 3906803058 | Kappe | CAP SPRING |
| 49 | 3906803059 | Feder | SPRING TENSION |
| 50 | 3906803060 | Federhalter | RETAINER SPRING |
| 51 | 3906803061 | | |
| 52 | 3906803062 | | |
| 53 | 3906803063 | Schalterbox | switch box |
| 54 | 3906803064 | | |
| 55 | 3906803065 | | |
| 56 | 3906803066 | | |
| 57 | 88001740 | Schalter | SWITCH |
| 58 | 3906803067 | | |
| 59 | 3906803068 | Dichtring | GASKET QUILL |
| 60 | 06206201 | Rillenkugellager | BEARING |
| 61 | 3906803070 | Rohr | tube |
| 62 | 06206201 | Kugellager | BEARING |
| 63 | 3906803072 | Scheibe | washer |
| 64 | 88001769 | Bohrfutterschutz | EYE-SHIELD |
| 65 | 3906803074 | Mutter | nut |
| 66 | 01047109 | Sicherungsring | RETAINING RING |
| 67 | 3906803076 | Spindel | SHAFT SPINDLE |
| 68 | 88001768 | Bohrfutter | CHUCK |
| 70 | 3906803079 | | |
| 71 | 3906803080 | | |
| 72 | 3906803081 | | |
| 73 | 3906803082 | Mikroschalter | Micro switch |
| 46, 48-50 | 3906803083 | Rückholfeder kpl. | retaining spring cpl. |